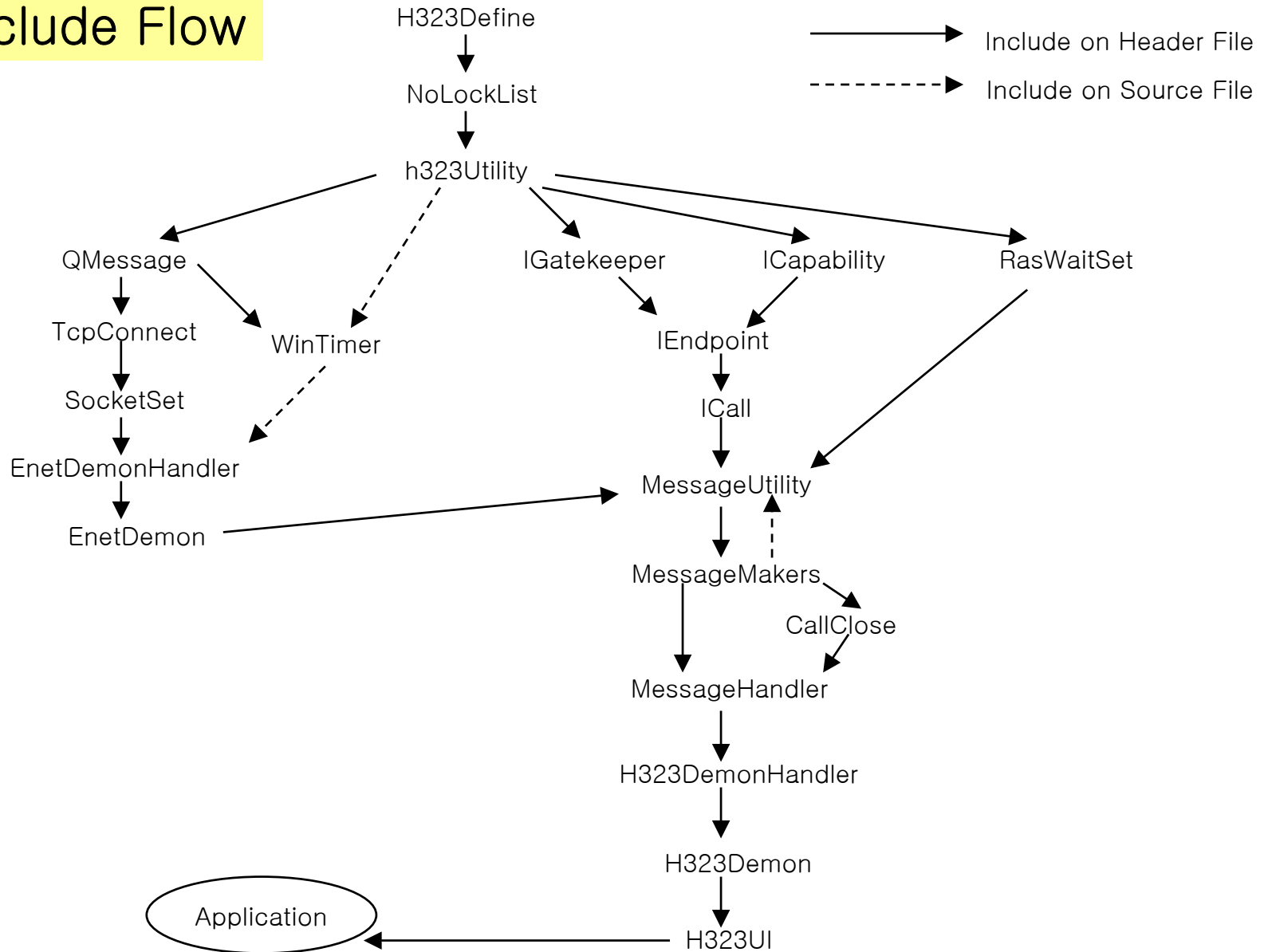


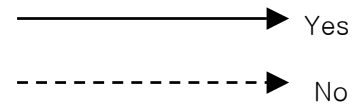
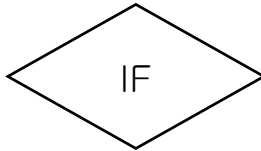
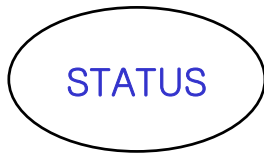
X-Stack (H.323)

– Status Diagram –

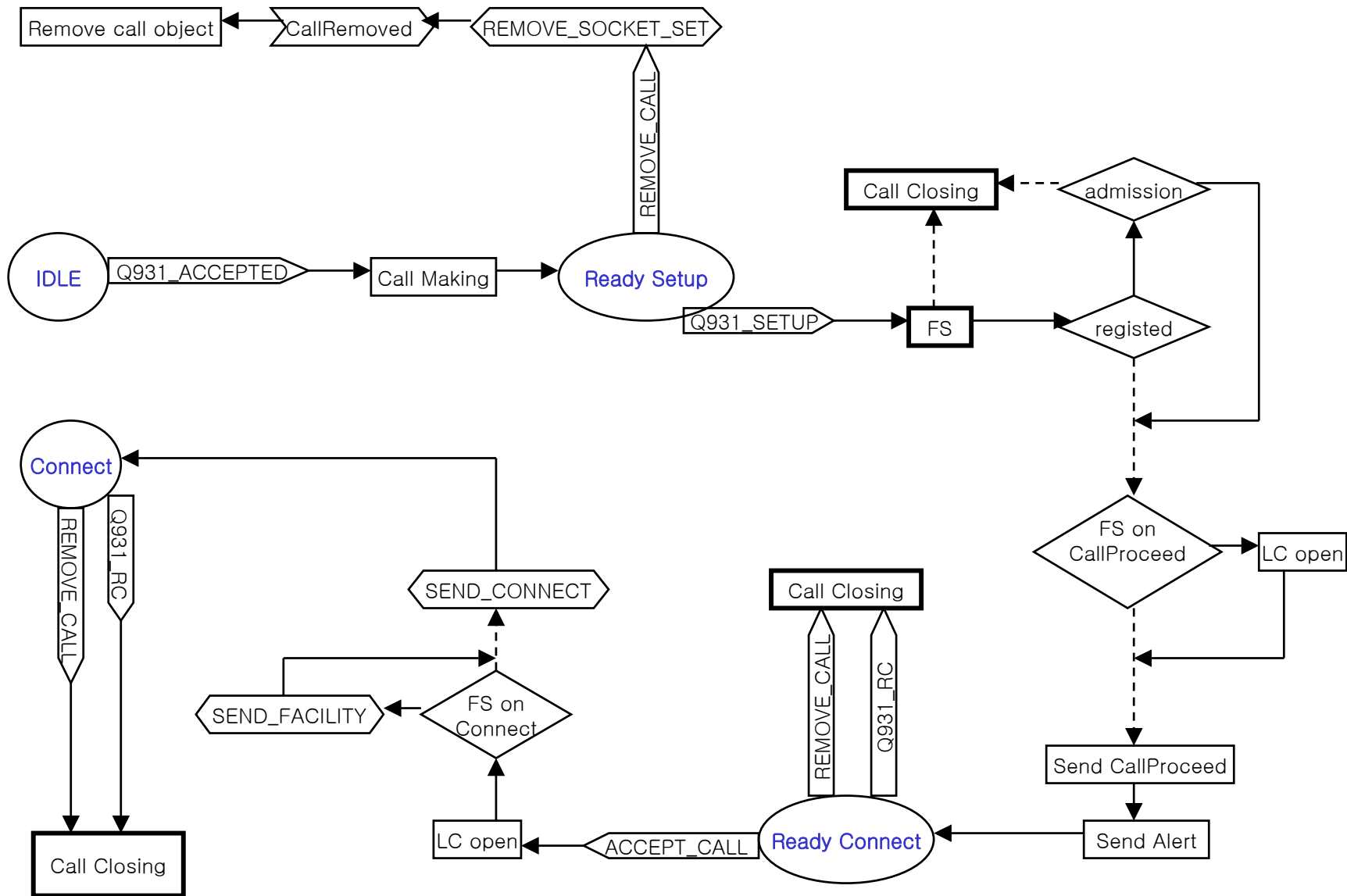
Include Flow



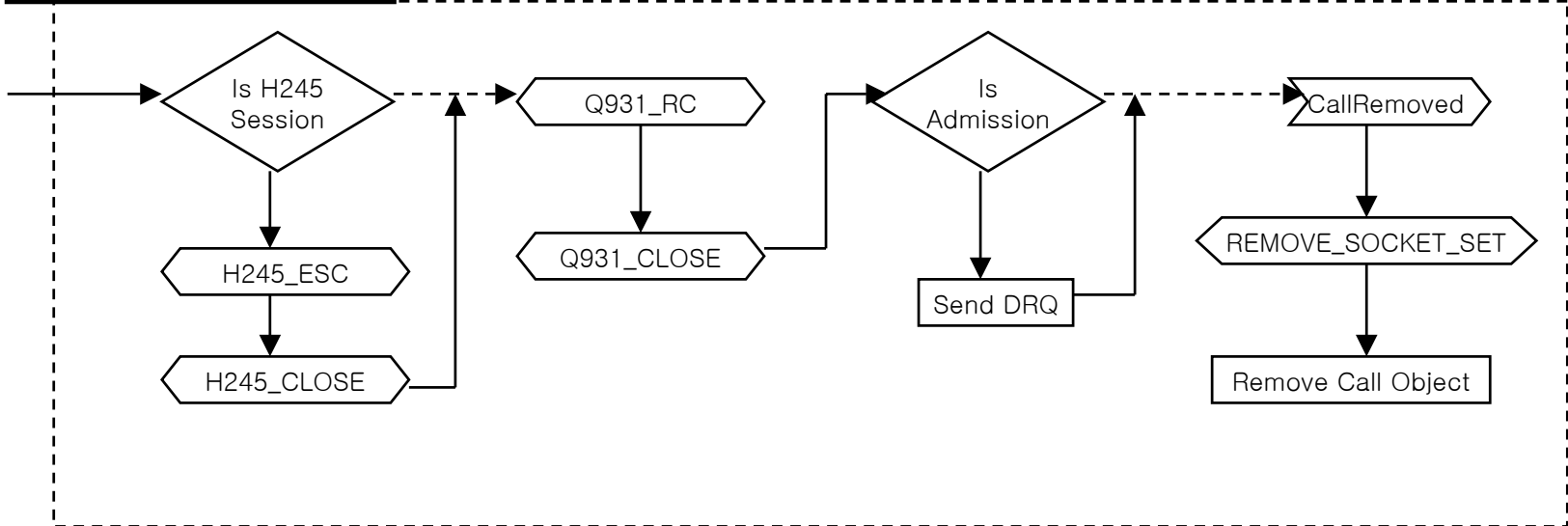
Status Diagram



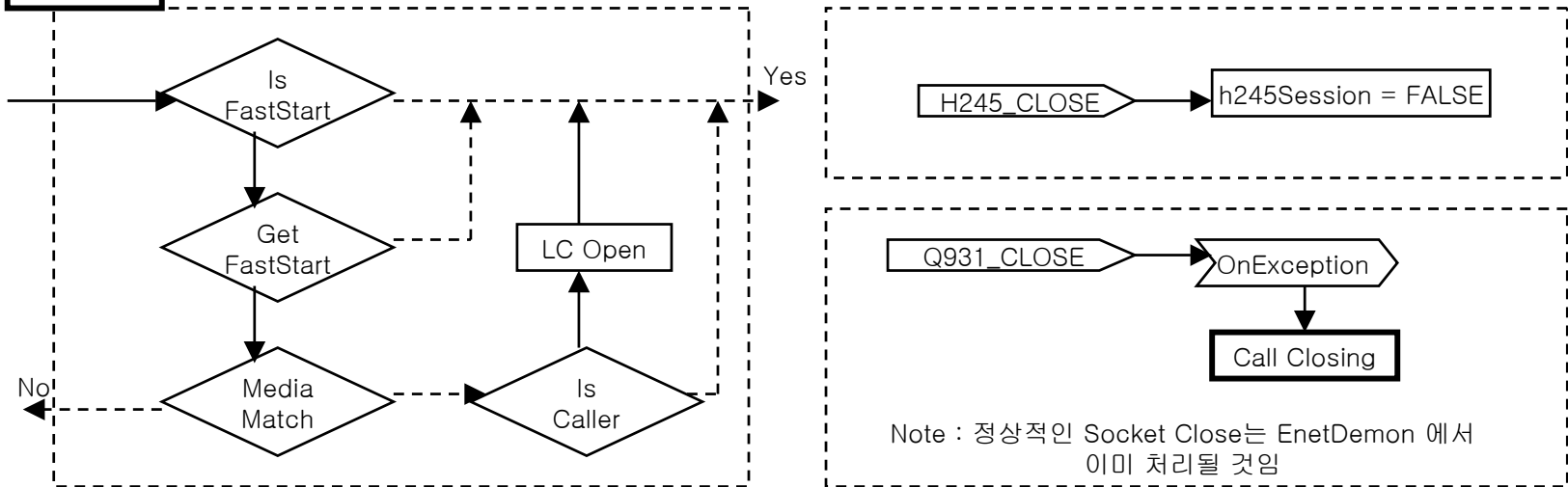
Called Party Flow



Call Closing



FS

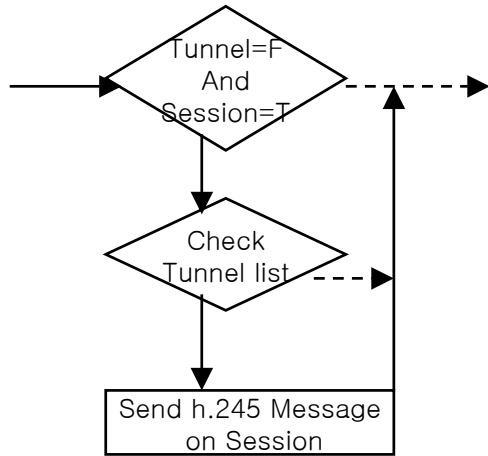


H245_CLOSE → h245Session = FALSE

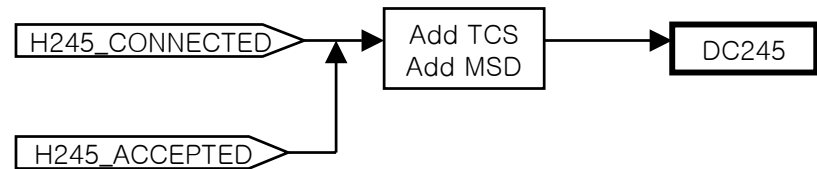
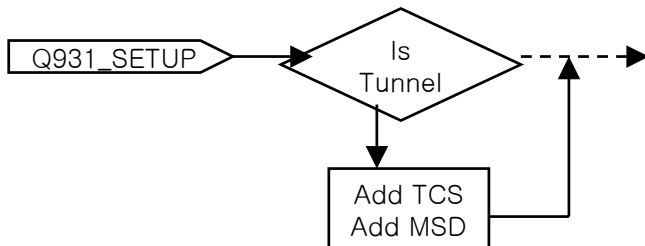
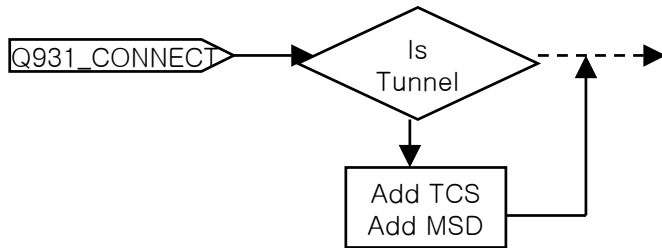
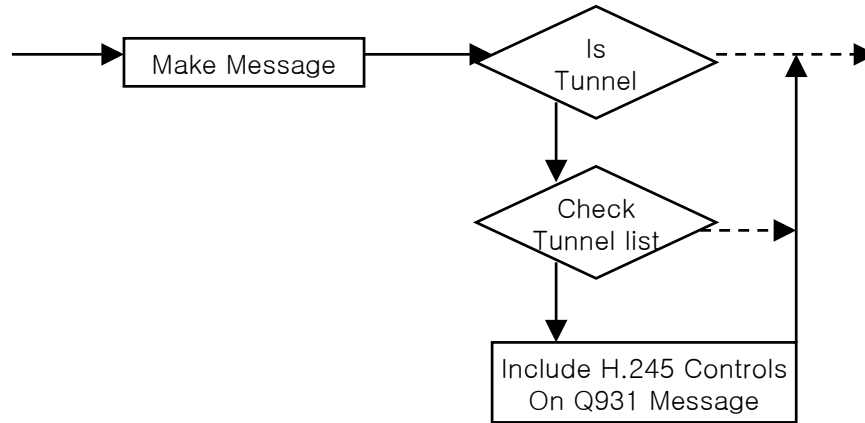
Q931_CLOSE → OnException → Call Closing

Note : 정상적인 Socket Close는 EnetDemon 에서 이미 처리될 것임

DC245_(discharge H.245)

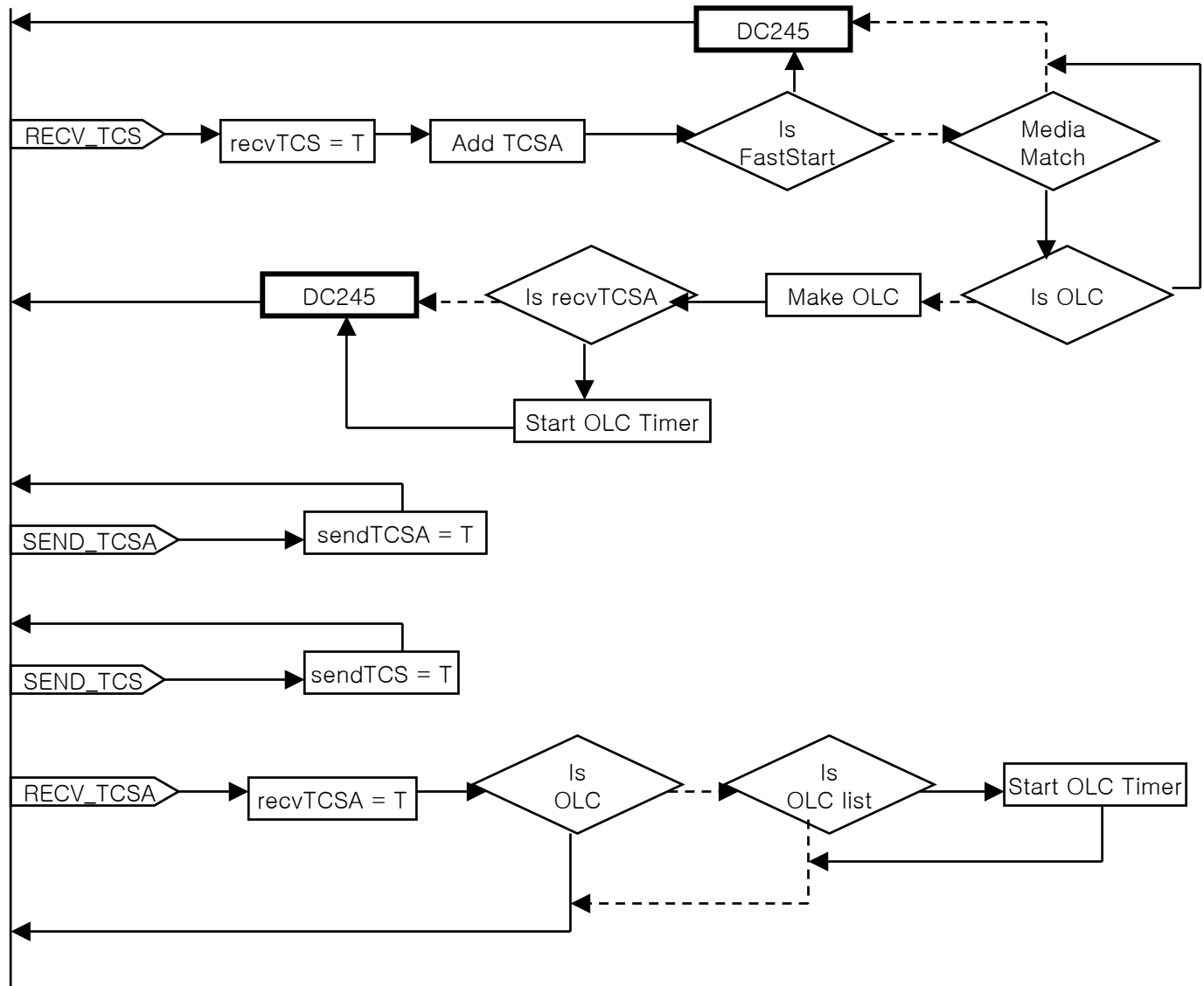


Make Q931



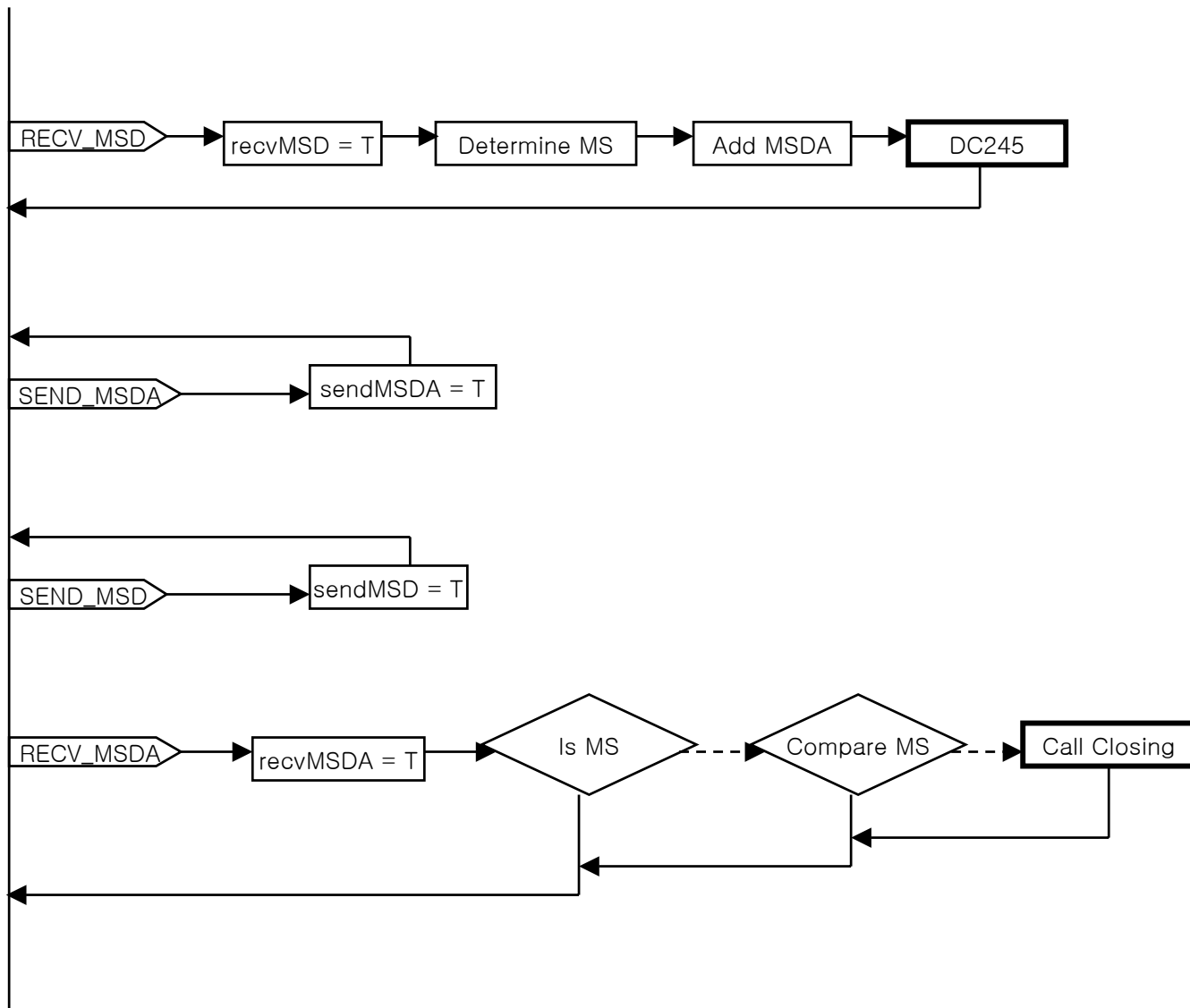
H245 – TCS

Ready State

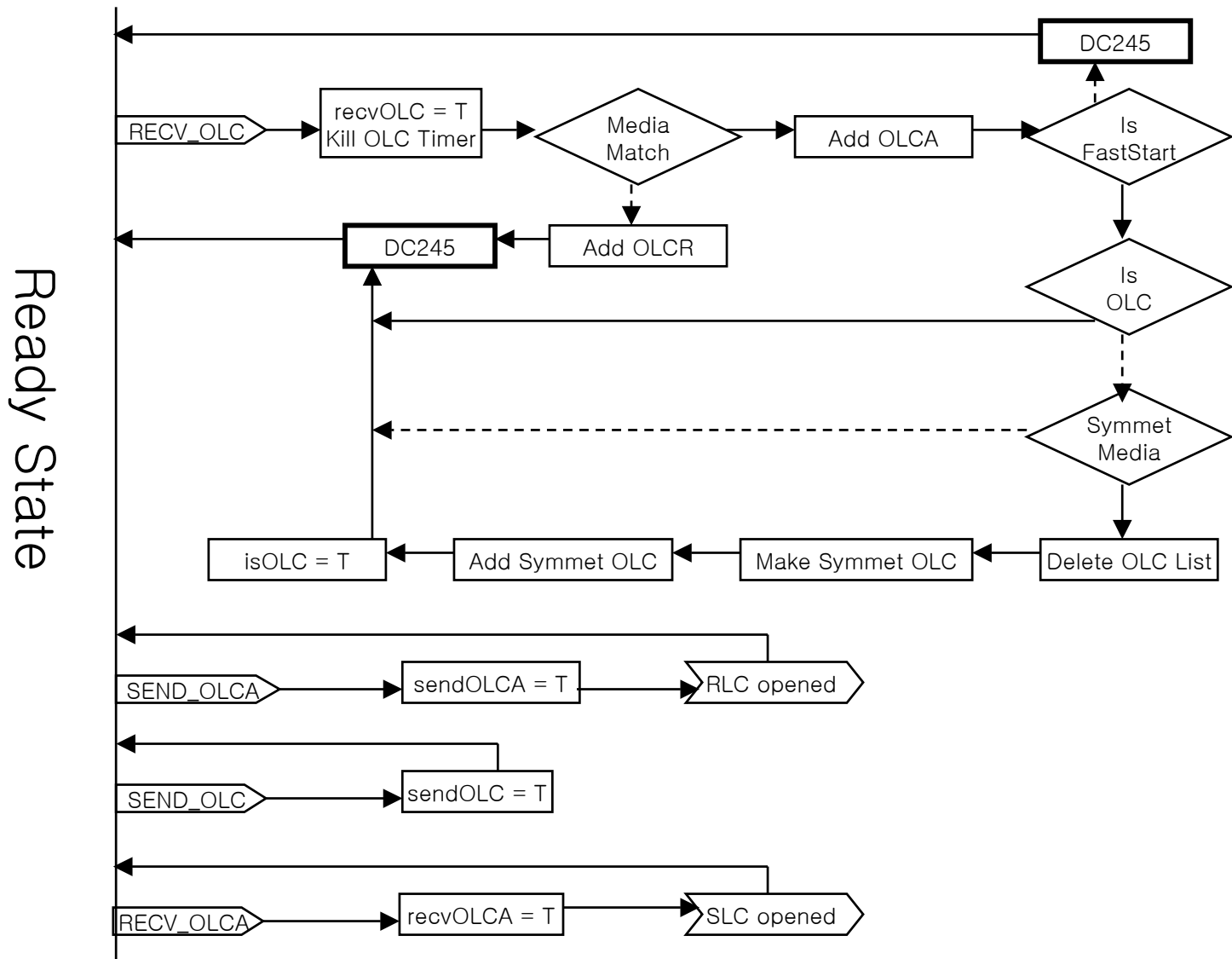


H245 – MSD

Ready State



H245 – OLC



H245 – ESC, OLC Timer

